

PROMISE STUDENTS



Children ready
for
Kindergarten



Students
proficient in core
subjects



Students graduate
high school and are
College/Career ready

ADULT ADVOCATES

Actively creating conditions to support
student success



COMMUNITY

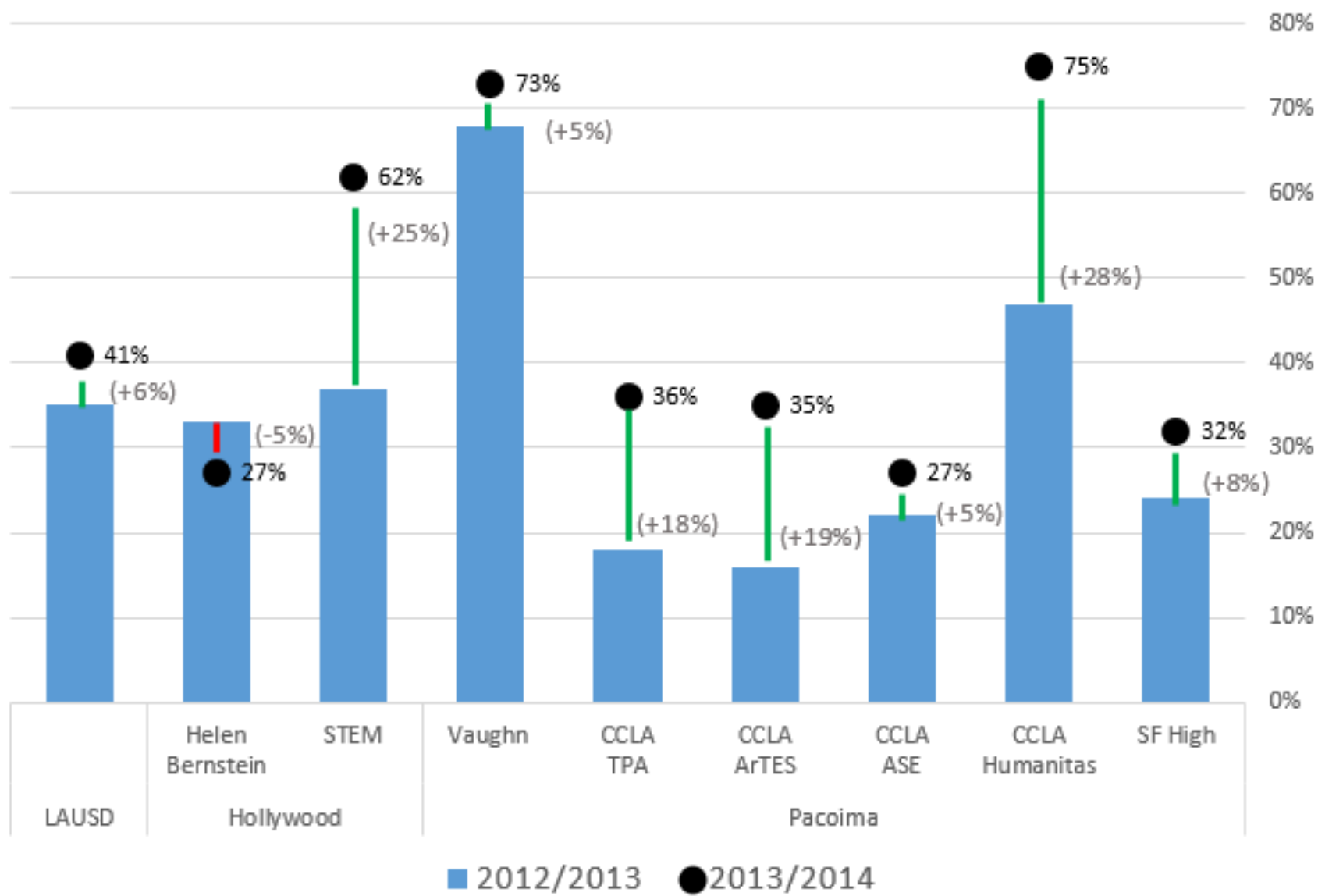
Support closing the opportunity gap



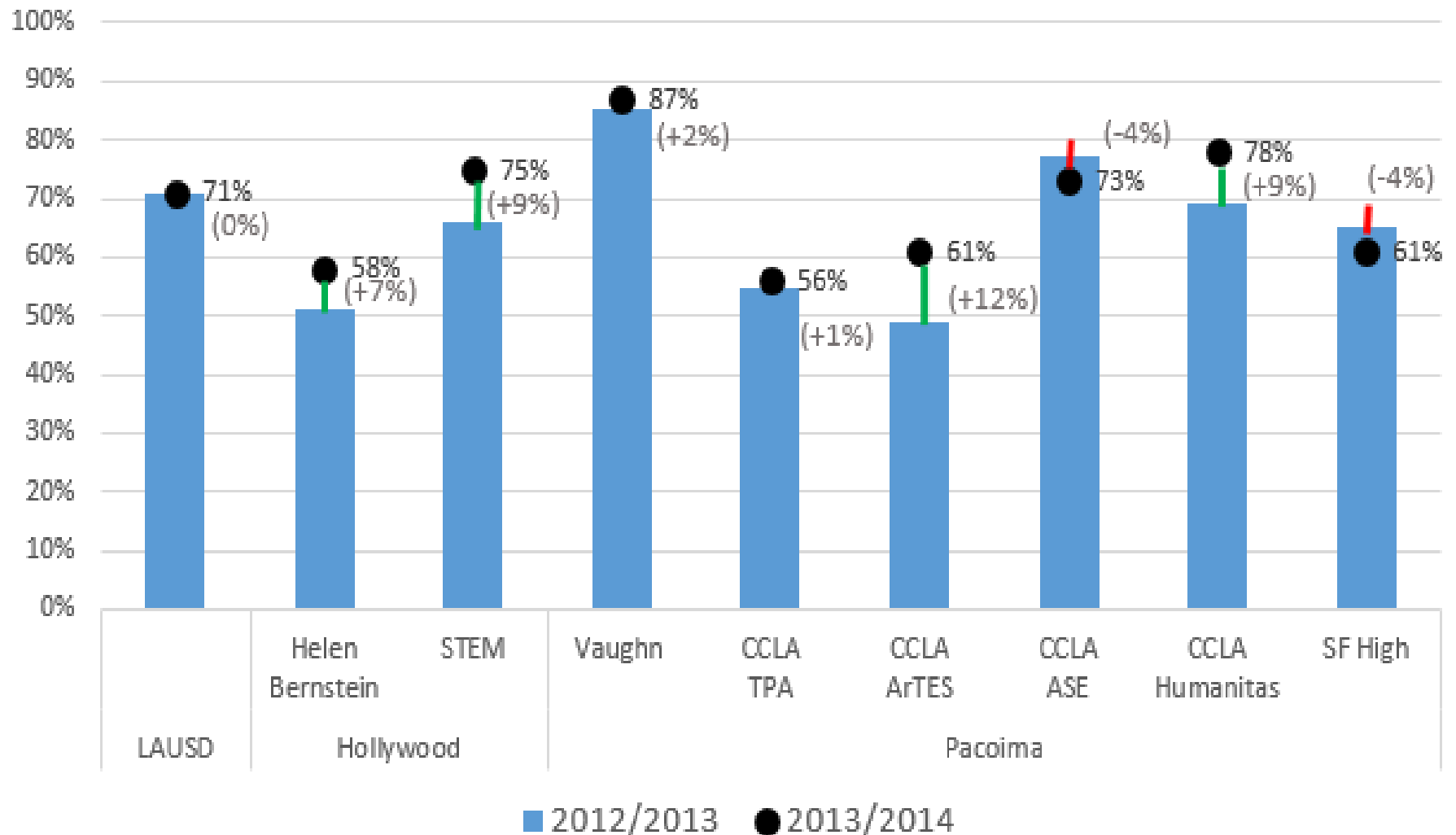
Competencies:

- Use data to drive strategies/goals
- Be adaptive and responsive to needs of students and schools
- Collaboratively develop and implement targeted solutions

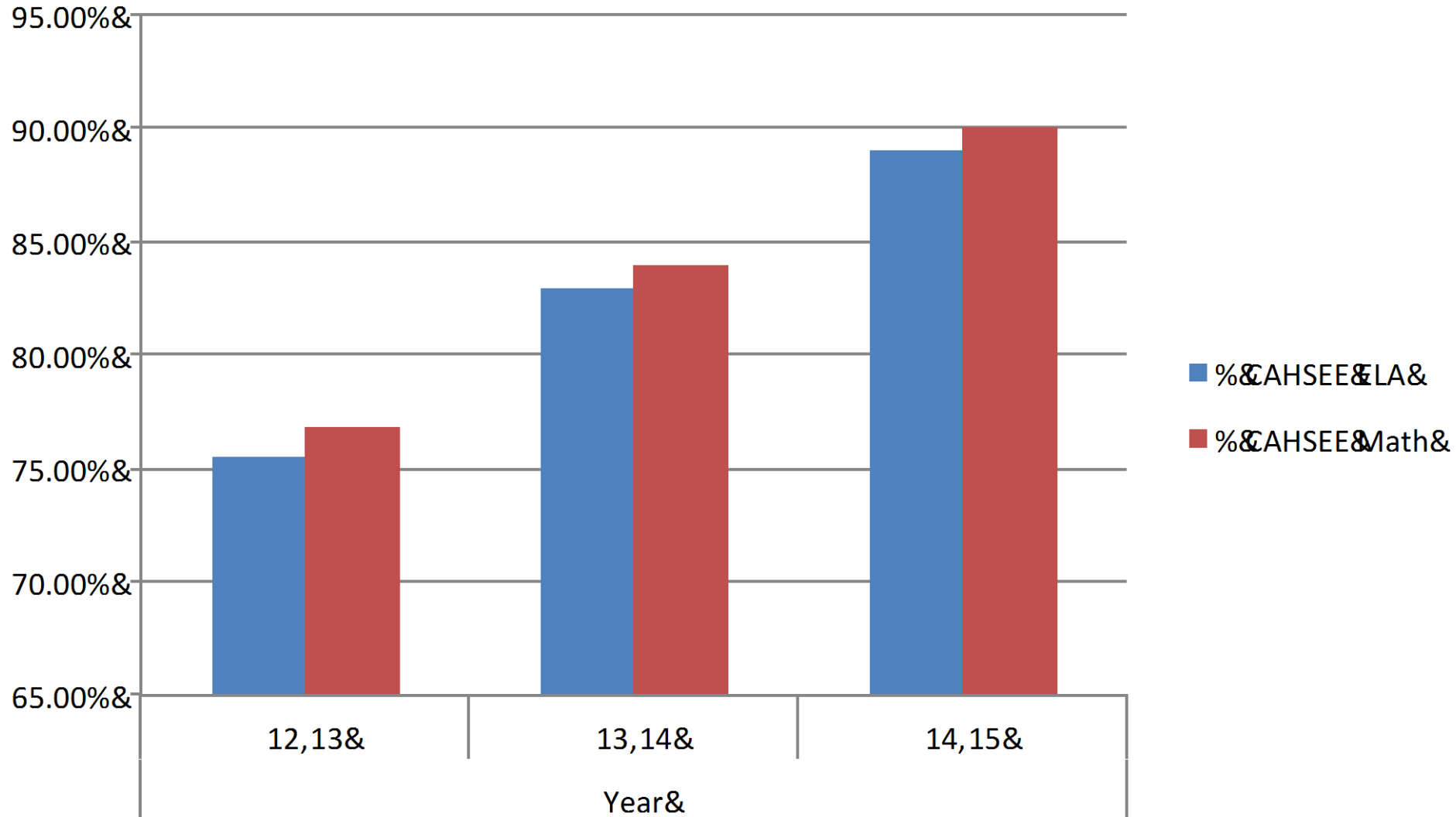
Students Graduating and Passing all A-G Courses



Students Passing CAHSEE by 10th Grade



Case Study: STEM Academy of Hollywood



Strategies

Students	Tutoring	10% of students in (high range) Standard Not Met and (all range) Standard Nearly Met range for Math and ELA
	CCSS-aligned assessments	NWEA at 9 of 18 LAPN Schools
	Computer-based intervention	Achieve3000, Accelerated Reader, [CAHSEE Revolution]
Teachers/Leaders	Professional Development	Common Core shifts and data-driven instruction
	School Leader Collaboration	Colloquia and collaborative work spaces based in CCSS-aligned ELA and STEM strategies
Parents/Community	Parent/Community Common Core Education	Common Core shifts and understanding SBAC results
	Parent/Community Academic Support	ESL, Computer Classes



Jesse Noonan:
jnoonan@ypiusa.org
(818)325-5282

BUILDING A BRIGHTER FUTURE
CRADLE-TO-COLLEGE-AND-CAREER