



The City Project

DENISE ROBINSON
Fulton College Prep.

0:10 / 0:49

<http://www.youtube.com/user/CityProjectCA>

1-6 of 6

ROBERT GARCIA
0:45

UTLA PE Campaig..

1:04

UTLA PE Campaig..

DENISE ROBINSON
0:50

UTLA PE Campaig..

1:04

UTLA PE Campaig..

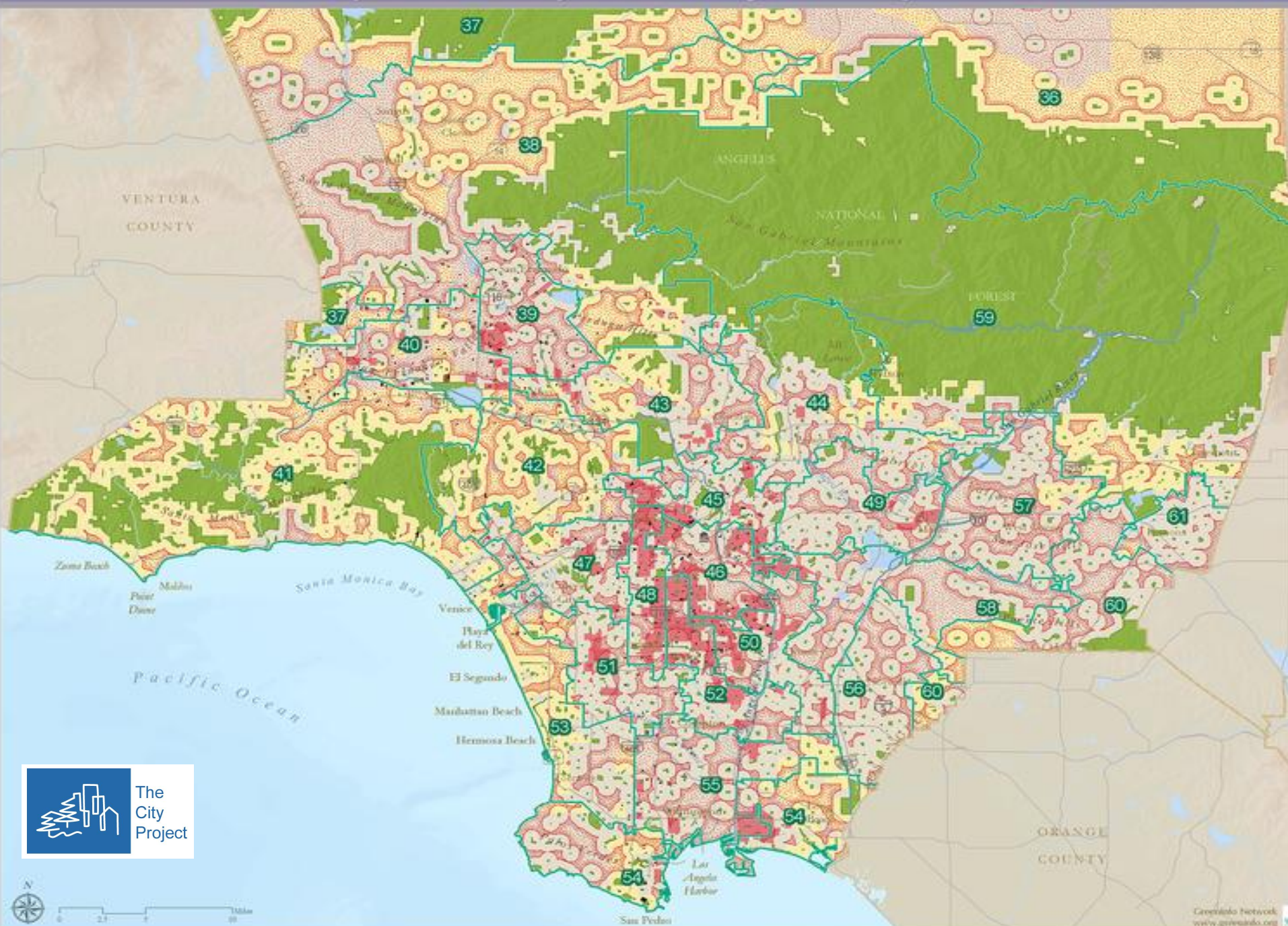
DALLAS COUNCIL BOARD MEMBERS
GET PARENTS AND COMMUNITY MEMBERS INVOLVED
0:54

UTLA PE Campai...

6:13

Healthy Parks, Sc...

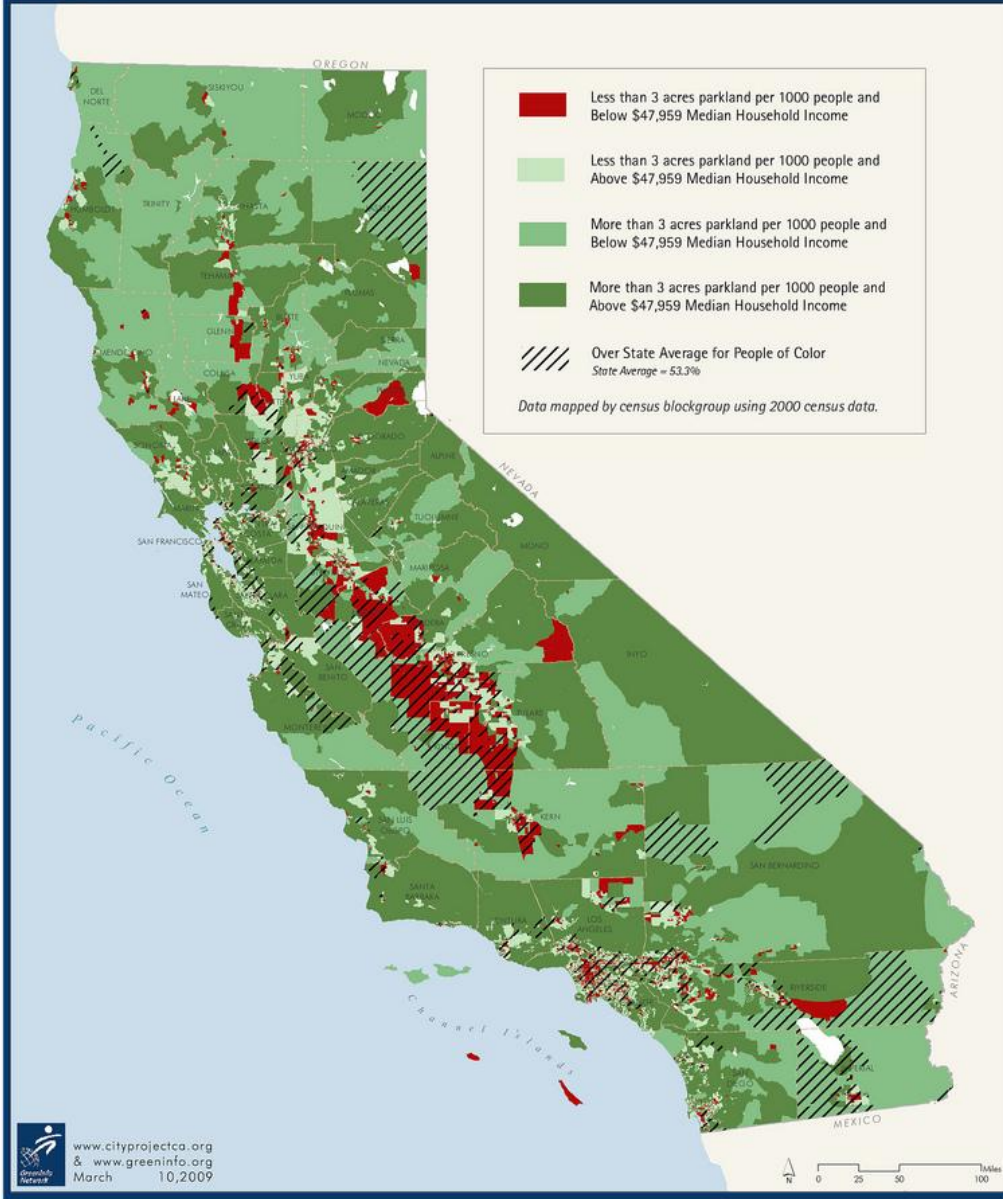
Park Access and Schools for Children of Color Living in Poverty with No Access to a Car





Park Acreage, Median Household Income and People of Color

2001



Park Poor and Income Poor

Park Poor =

< 3 acres parks per 1000 residents

Income Poor =

<\$48,000 median household income

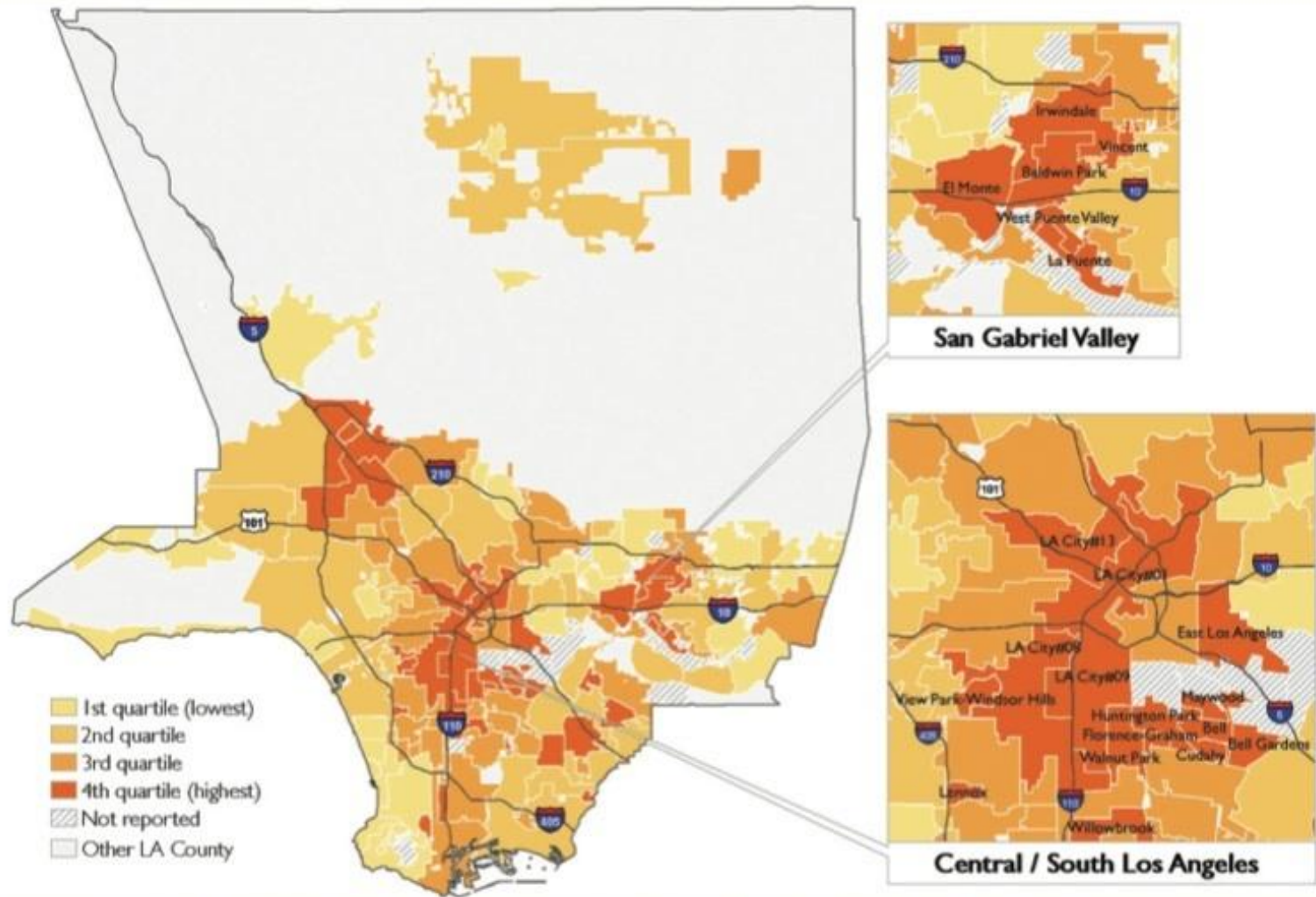
California Legislation AB 31

Stand ards

Measure progress and equity

Hold public officials accountable

Figure 1: Prevalence of Childhood Obesity, 2005



⁵ Data drawn respectively from the California Nutrition Network and several law enforcement agencies – California Department of Justice, Los Angeles County Sheriff's Department, City of Los Angeles Police Department.

⁶ Note that rankings for smaller cities and communities should be interpreted with caution as they are more subject to variation from small changes

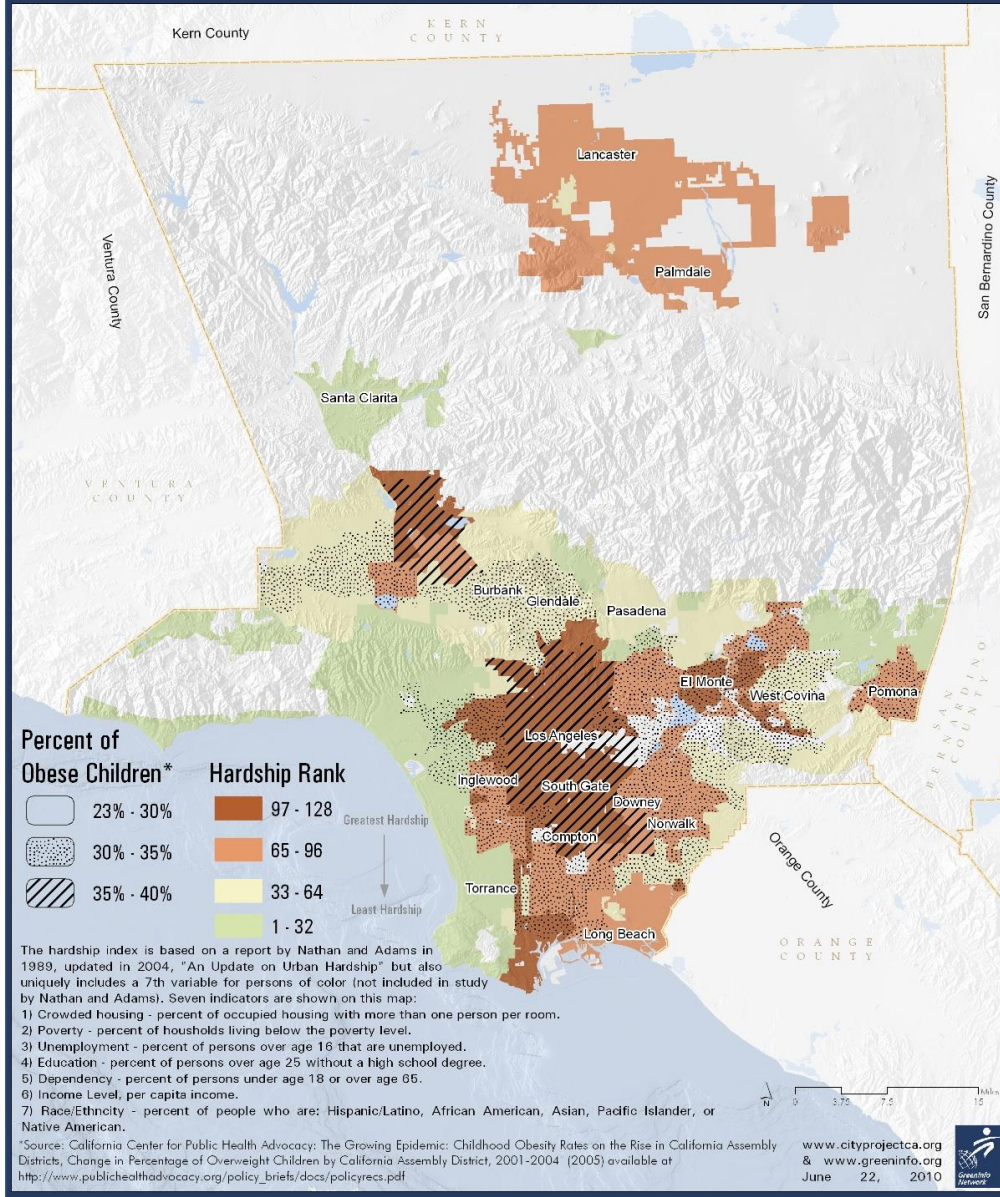
⁷ Correlation coefficient = 0.83; p-value < 0.001

⁸ Correlation coefficient = -0.47; p-value < 0.001



Childhood Obesity, Economic Hardship, and Race & Ethnicity

for Los Angeles County, by 2000 Census Designated Places



No place to play

87% non-Hispanics “safe places for children to play”

81% Asians

71% African Americans

68% Hispanics

48% Hispanic under 18 kept inside central city

39% black children

25% non-Hispanic white children

24% Asian children

Non-Hispanic White children most likely in sports

Hispanic children and children in poverty least likely

US Census Bureau Survey





Strategies for Success

1. Collective Vision -- Diverse Values Bring People Together
2. Multidisciplinary Research and Analyses
3. Strategic Media Campaigns
4. Policy and Legal Advocacy Outside the Courts
5. Access to Justice in Court

Values at Stake

Human Health

Simple Joys of Playing in Park and School

Physical, Psychic, and Social Health

Reduce Obesity and Diabetes

Improve Academic Performance and Youth Development

Positive Alternatives to Gangs, Drugs, Crime, Violence

Social Cohesion-Bring People Together

Conservation Values

Climate Justice; Clean Air, Water, Land; Habitat Protection

Preserve Culture, Heritage and Art

Spiritual Values Protect Earth and Its People

Diversity

Equal Justice

Democracy

Livability for All

Antidiscrimination Principles

1. clear description of what is planned
2. analyze impact on all populations, including minority and low income populations
3. analyze alternatives
4. include minority and low income populations in decision-making
5. implementation plan to address equity concerns

Title VI Civil Rights Act 1964 & regulations
CA Govt Code 11135 & regulations

Discriminatory Impacts -- Race, Color, National Origin

1. Numerical disparities
2. Business Necessity
3. Less Discriminatory Alternatives

Title VI Civil Rights Act 1964 and regulations

CA Govt Code 11135 and regulations

Intentional Discrimination -- Race, Color, National Origin

1. Numerical disparities
2. History of Discrimination
3. Substantive Irregularities
4. Procedural Irregularities
5. Knowledge of Impact
6. Pattern and Practice

Title VI Civil Rights Act 1964 and regulations
CA Govt Code 11135 and regulations



The City Project